

# 21st Century Kitchens



Stephen Crafti  
images  
Publishing

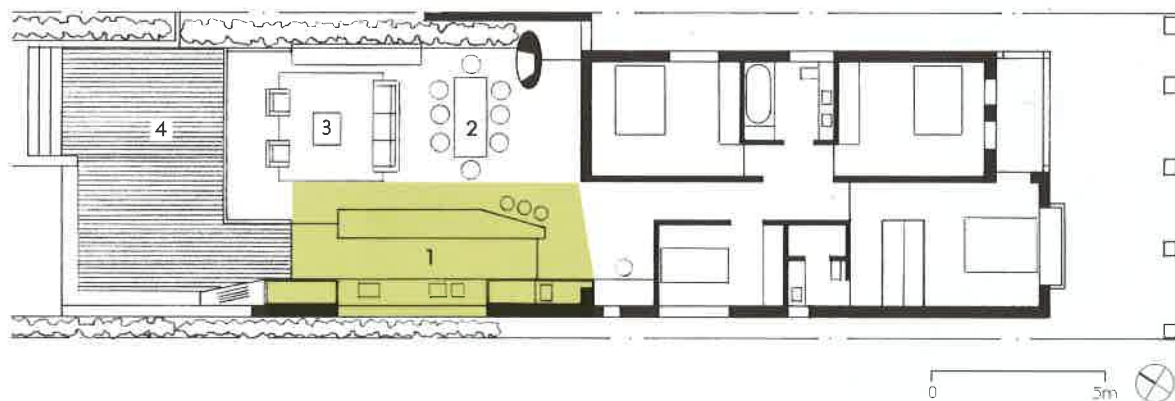


The roof is punctured by four skylight openings that track the movement of the sun throughout the day



**THIS PROJECT IS LOCATED** opposite a small park and is within a heritage conservation area. The existing house is a single-storey Federation cottage. The clients are a family of five and the brief called for a four-bedroom house with an open-plan living/dining/kitchen area that needed to have a connection to outdoor entertaining and a new swimming pool.

The design solution was to extend to the rear and keep the existing house as a single-storey cottage, thereby providing a clear separation between the original house and the new extension. This separation is further enhanced by the relocated entry to the house. >>



- 1 Kitchen
- 2 Dining area
- 3 Living area
- 4 Deck







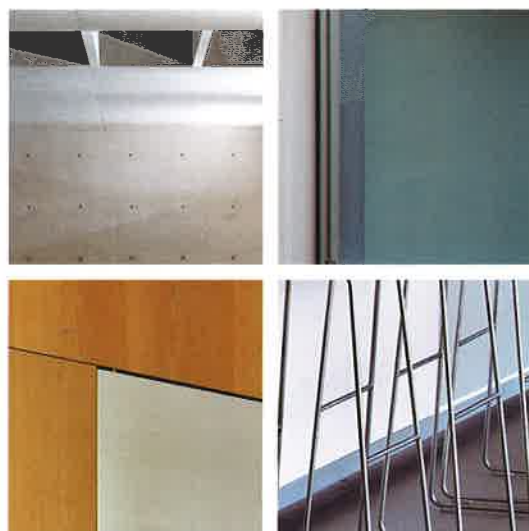




The new living/dining/kitchen area is defined by an off-form concrete roof supported by steel columns, which have been incorporated into the glazing system in order to make them disappear. The experience is that of a 'floating' concrete roof, which is further emphasised by the hanging wall to the east. The roof is punctured by four skylight openings that track the movement of the sun throughout the day. This open-plan space flows to an outdoor timber deck from which the pool is accessed via four steps. The roof floats past the glazed doors to create an overhang and provide sun control in summer to the north.

The kitchen runs the full length of the south-eastern wall. The overhead cupboards of the kitchen appear to float within the clear glass splashback and the highlight strip window running above them. The colour scheme of bubble-gum pink for the overhead cupboards and pale, willow green and off white were chosen to offset the industrial feel of grey concrete. The island bench anchors the entire space and is made of Corian. The splay of the island bench is a direct result of the circulation requirements of the space. The kitchen bench continues past the glass door to the outside deck to house the barbeque.





It's like a stage, where the performance of cooking takes place



- 1 Kitchen
- 2 Dining area
- 3 Living area

**THE OWNERS OF THIS** house enjoy views over Sydney's Lane Cove River. However, this view isn't evident from the street. "It's only when you descend the stairs that the view opens up," says architect Vladimir Ivanov, co-director of Cullinan Ivanov Partnership.

The house, made from off-formed concrete, was designed for a couple with three children. "They wanted a house that was robust, averting anything that was showy," says Ivanov. The kitchen, located on the middle level, forms part of the open-plan living areas. On one side of the kitchen is the dining area, and on the other side is the lounge. All three areas lead to a terrace, with views of the river. The kitchen and dining area also have an aspect towards a feature sandstone wall and reflective pond. "We wanted to bring additional light into the kitchen and living areas," says Ivanov. >>











To define the kitchen from the living areas, the architects raised the kitchen one step. They also differentiated the kitchen from the living areas by using white rubber flooring in the kitchen, with charcoal stone tiles else-where. "It's like a stage, where the performance of cooking takes place," says Ivanov.

Central to the design of the kitchen is a 6-metre-long island bench. Made from white Corian, this bench cantilevers at one end to create a breakfast nook for the family. "We used Corian as we didn't want to see any seams in the surface," says Ivanov, who inserted a bright red polyurethane strip into the bench. Backlit, this strip glows at night.

Complementing the island bench is a wall of joinery, made from MDF, with a polyurethane finish in white. The architects used toughened glass as the splash-back, which reflects the sandstone wall. Light bouncing from the water in the reflective pond creates a magical effect.

"It's quite a simple kitchen. It's not over designed. The focus is on the water, as well as the ceiling (off-formed concrete). And on warmer days, there's nothing more pleasurable than eating breakfast on the terrace," says Ivanov.

